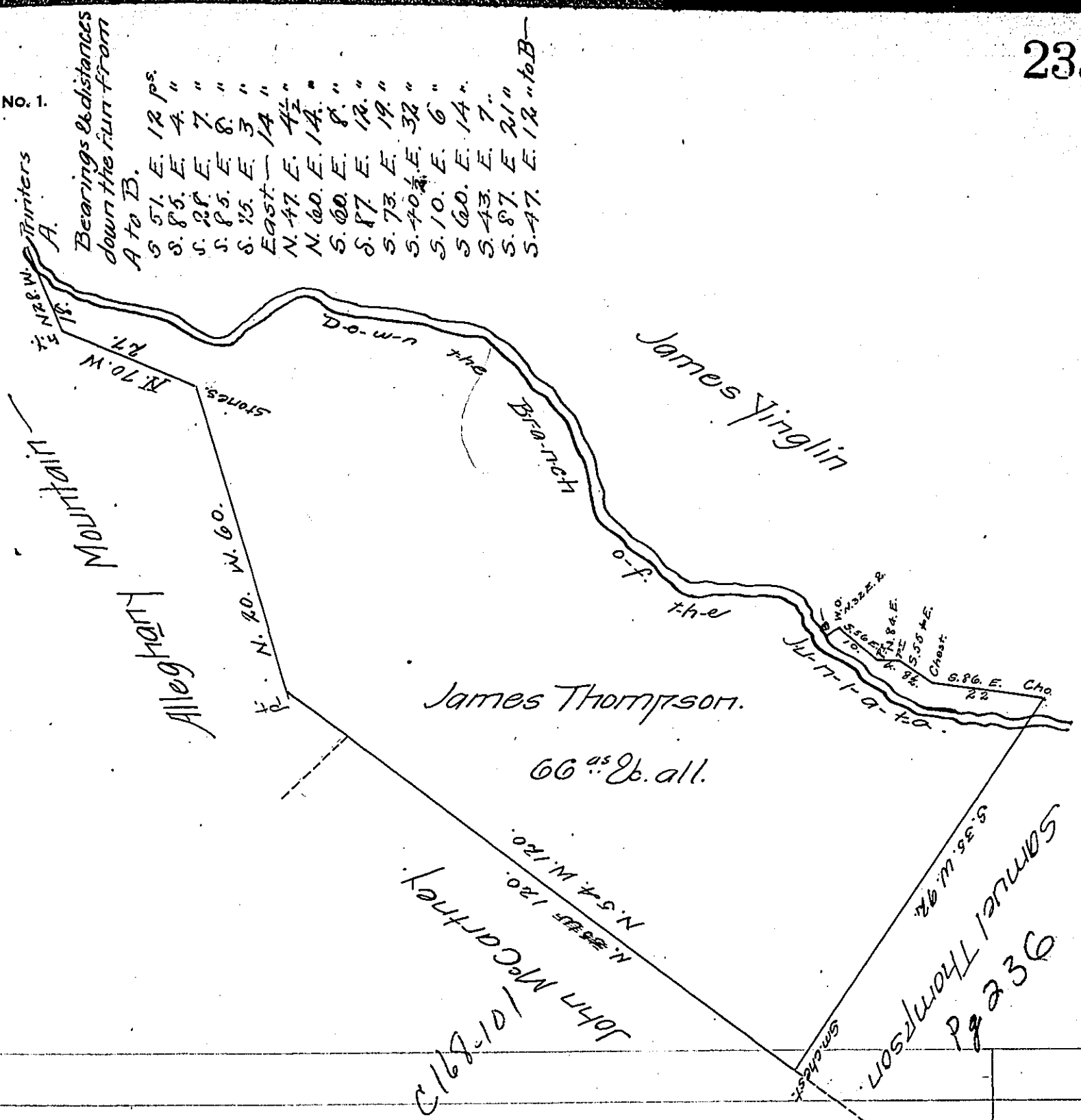


FORM NO. 1.



Bearings & Distances
down the Run from
A to B.

| |
|---------------------|
| S. 51. E. 12 ps. |
| S. 85. E. 4 " |
| S. 28. E. 7 " |
| S. 85. E. 8 " |
| S. 75. E. 3 " |
| East - 14 " |
| N. 47. E. 4 1/2 " |
| N. 60. E. 14 " |
| S. 60. E. 8 " |
| S. 87. E. 12 " |
| S. 73. E. 19 " |
| S. 40 1/2. E. 32 " |
| S. 10. E. 6 " |
| S. 60. E. 14 " |
| S. 43. E. 7 " |
| S. 87. E. 21 " |
| S. 47. E. 12 " to B |

Situate in Logan Township Blair County Containing sixty six
acres and allowance Surveyed the 3^d day of December A.D. 1851
in pursuance of a Warrant to James Thompson dated 17th November 1851
James L. Gwin C.S.

To J. Porter Brawley }
Surveyor General }

IN TESTIMONY that the above is a copy of the original remaining on file in
the Department of Internal Affairs of Pennsylvania, made
conformably to an Act of Assembly approved the 16th day of
February 1833, I have hereunto set my hand and caused
the Seal of said Department to be affixed at Harrisburg,
this Eighth day of March 1907.

Lea O. Brown
Secretary of Internal Affairs.